

Sudoku Mild No 14,588

			7	5				
		7			9	1	3	8
	4	1		8		2		
9		2	4		3	8		6
		3		6		4	9	
7	1	4	2			5		
				7	4			

Difficult No 14,589

Super fiendish No 14,590

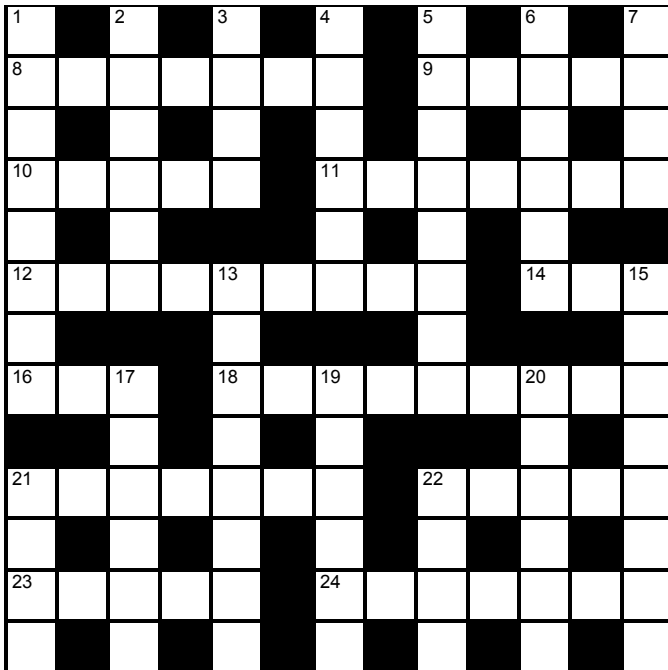
6								
						3		9
8	5		7	3				1
	6		2		7	9	4	
					4			
	2		1		9	5	3	
5	9		8	4				6
						2		3
2								

		1						
		3			8			2
5	6		1	4				
		2		9	3		8	
		7	2					3
	8		7					
							4	1
			4			6		8
4				6		2	7	9

© PUZZLER MEDIA

Cluelines Stuck on Sudoku, Killer or KenKen? Call 0901 293 6263 before midnight to receive four clues for any of today's puzzles. Calls cost £1 plus your telephone company's network access charge. SP: Spoke, 0333 202 3390 (Mon-Fri 9am-5.30pm).

The Times Quick Cryptic No 2567 by Breadman



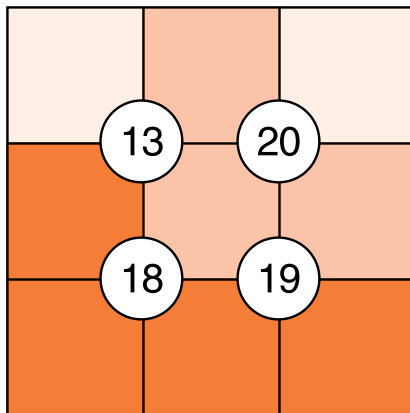
Across

- 8 Councillor, old and restful, avoiding one game on lawn (7)
- 9 Bad-tempered woman, former spouse recalled, into French wine (5)
- 10 Group of stars having duck and port with knight (5)
- 11 Famous scientist dreamy, wanting diamonds for wife (7)
- 12 Place for valuables close, turning key fast (5,4)
- 14 Health centre son joined with father (3)
- 16 Regularly tell off mischievous child? (3)
- 18 Put restrictions on gang criminal (4-5)
- 21 Weather feature depicted by artist in East London area (7)
- 22 One in road moved fast (5)
- 23 Article, current, on unknown Antipodean soldier (5)
- 24 Citizen's aquatic vessel caught in stream (7)

Down

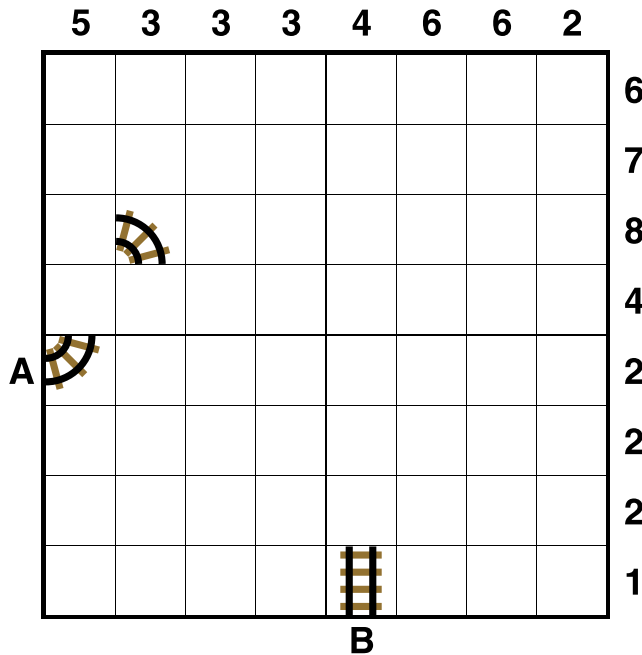
- 1 Sponge transformed rugs once (8)
- 2 Scrapping an Olympic sport (6)
- 3 Smart black vase (4)
- 4 Post first-class to reach Scottish island (6)
- 5 Botanist may look thus on next page (8)
- 6 Displays suede pants — around five pairs? (6)
- 7 Up in Rhyl, Noel's alone (4)
- 13 Group of workers with Royal Navy support retreat (4,4)
- 15 Deacon broadcast both sides of the short story (8)
- 17 Reportedly stabilise architectural adornment (6)
- 19 Most modern members of flock probing religious books (6)
- 20 Person who steals a pound (6)
- 21 Sheets of paper, yellowish-white, Charlie removed (4)
- 22 Fleece covering English gown (4)

Suko No 4007



Place the numbers 1 to 9 in the spaces so that the number in each circle is equal to the sum of the four surrounding spaces, and each colour total is correct

Train Tracks No 2138



Lay tracks to enable the train to travel from village A to village B. The numbers indicate how many sections of track go in each row and column. There are only straight sections and curved sections. The track cannot cross itself.

Word watch
David Parfitt

Quinquereme

- a A ship with five banks of oars
- b A tonic for treating malaria
- c A group of 25 items

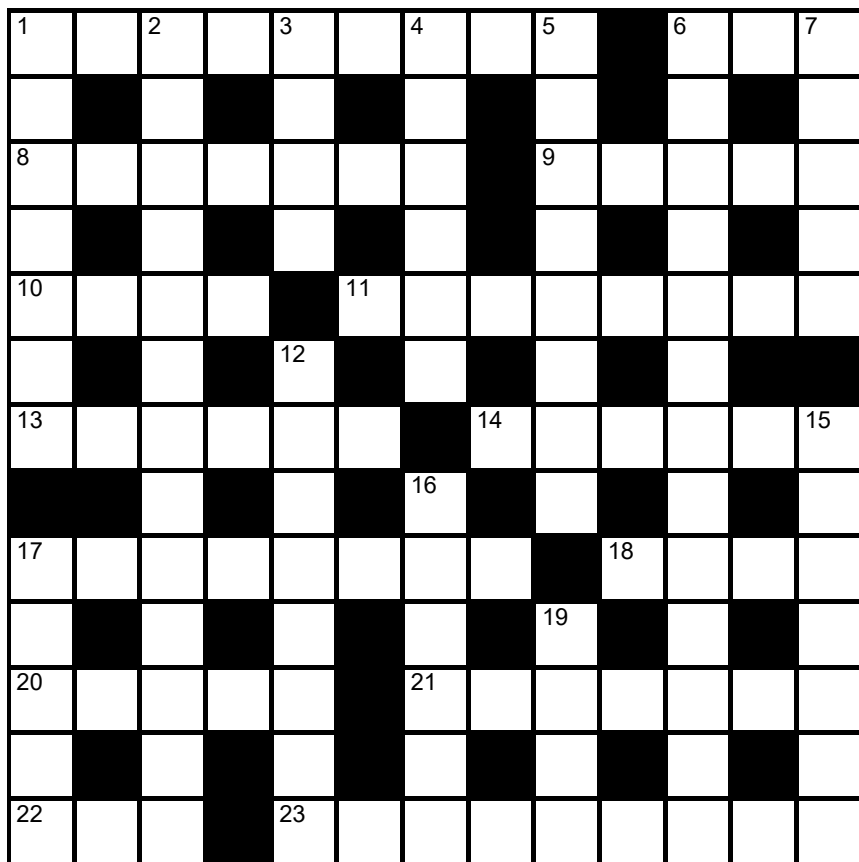
Plumassier

- a A variety of damson
- b A trader in ornamental feathers
- c An expert diver

Vitiosity

- a The state of being legally faulty
- b Liveliness, enthusiasm
- c The nutritional value of a food

times2 Crossword No 9422



Across

- 1 Garden pollinator (9)
- 6 Top surface of a stove (3)
- 8 Warlike (7)
- 9 Part of a flower (5)
- 10 Peel, rind (4)
- 11 Greater portion (8)
- 13 Bumper car (6)
- 14 One enrolled in a club (6)

- 17 Insulin-secreting organ (8)
- 18 Lump of earth (4)
- 20 Extraterrestrial (5)
- 21 Metabolic sugar (7)
- 22 Small barrel (3)
- 23 One adhering strictly to a policy or principle (9)

Solution to Crossword 9421

U	L	N	A		S	T	R	A	P	P	E	D		
N	I				H	C		A				E		
W	I	T	T	I	E	R		R	U	L	E	S		
I		R		M	E		I	E				K		
S	H	E	E	P	F	A	R	M	E	R				
E				R	T	O		M				P		
S	H	A	M	A	N		U	N	C	O	O	L		
T		M		C		R		I				E		
				O	R	T	H	O	D	O	N	T	I	C
A		U		I		U		U		R		T		
C	O	N	I	C		B	O	S	S	I	E	R		
E		T		A		L				P		U		
R	E	S	O	L	V	E	D			S	E	A	M	

Down

- 1 Mystified (7)
- 2 Traditional English folk activity (6,7)
- 3 Wild animal's home (4)
- 4 Aromatic resin (6)
- 5 One who has hired staff (8)
- 6 Flying conveyance (3-3,7)
- 7 Cumbersome (5)
- 12 Reduce costs, economise (8)
- 15 Large British herbivore (3,4)
- 16 Feeding trough (6)
- 17 Length of wood (5)
- 19 Seabird (4)

Need help with today's puzzle? Call 0905 757 0143 to check the answers. Calls cost £1 per minute plus your telephone company's network access charge. SP: Spoke, 0333 202 3390 (Mon-Fri 9am-5.30pm).

KenKen Medium No 6098

2-		7+	3+		90X
2-			3-	6	
	3	2-		3-	
3+	2÷		13+		
		7+		9+	
1-				6X	

All the digits 1 to 6 must appear in every row and column. In each thick-line "block", the target number in the top left-hand corner is calculated from the digits in all the cells in the block, using the operation indicated by the symbol.

Futoshiki No 4647

<input type="text"/>	<input type="text"/>	<input type="text"/>	<input type="text"/>	<	<input type="text"/>
<input type="text"/>	<input type="text"/>	<input type="text"/>	<	<input type="text"/>	<input type="text"/>
<input type="text"/>	>	<input type="text"/>	>	<input type="text"/>	<input type="text"/>
<input type="text"/>	<	<input type="text"/>	<input type="text"/>	<input type="text"/>	3
<input type="text"/>	<input type="text"/>	4	<input type="text"/>	<input type="text"/>	<input type="text"/>
<input type="text"/>	<	<input type="text"/>	<input type="text"/>	<	<input type="text"/>

Fill the blank squares so that every row and column contains each of the numbers 1 to 5 once only. The symbols between the squares indicate whether a number is larger (>) or smaller (<) than the number next to it.

Kakuro No 3606

	17	16	23	8		8	6	33	4
29					4	11			
22						10			
	25	38	10			5	4		
23					3		9	4	20
27					22		27		
11					10	12			
6			16			10	3	9	23
	12		24						
30	16			11					10
				12					17
29						19			
									26

Fill the grid using the numbers 1 to 9 only. The numbers in each horizontal or vertical run of white squares add up to the total in the triangle to its left or above it. The same number may occur more than once in a row or column, but not within the same run of white squares.

© PUZZLER MEDIA

Quintagram®

Solve all five cryptic clues using each letter underneath once only

1 British member back on a roll (5)

— — — — —

2 Joke from the French that's disgusting! (5)

— — — — —

3 I'm great perplexing French solver! (7)

— — — — —

4 Soft soap smoother? (7)

— — — — —

5 Knowing nothing of Tir-na-nOg, sadly (8)

— — — — —

A	A	A	A	A	B	E	E
E	F	G	G	G	G	H	I
I	L	L	L	M	N	N	O
R	R	R	T	T	T	T	U

Brain Trainer

EASY	4	x 8	+ 4	TRIPLE IT	- 12	÷ 8	x 12	+ ⁵ / ₈ OF IT	DOUBLE IT	+ 32	ANSWER	
MEDIUM	86	DOUBLE IT	x 2	- 20	÷ 18	HALF OF IT	x 9	+ 3	+ ⁷ / ₁₂ OF IT	DOUBLE IT	ANSWER	
HARDER	220	TRIPLE IT	+ ³ / ₁₀ OF IT	DOUBLE IT	- ⁵ / ₆ OF IT	+ 226	÷ 64	x 5	+ ³ / ₁₀ OF IT	+ 9	ANSWER	

Polygon



From these letters, make words of three or more letters, always including the central letter. Answers must be in the *Concise Oxford Dictionary*, excluding capitalised words, plurals, conjugated verbs (past tense etc), adverbs ending in LY, comparatives and superlatives. **How you rate** 11 words, average; 15, good; 18, very good; 22, excellent

Yesterday's answers

ague, argue, arum, auger, beau, begum, brume, bug, bum, bur, burg, emu, gaur, geum, grub, guar, gum, gur, mug, murage, mure, rub, rube, rue, rug, rum, rumba, umber, umbra, **umbrage**, urea, urge

Cell Blocks No 4989

Divide the grid into square or rectangular blocks, each containing one digit only. Every block must contain the number of cells indicated by the digit inside it.

Set Square No 3609

	x	x	= 120
x	□	+ □	+ = 3
-	□	+ □	x = 25
-	□	+ □	x = 16
	x 9	+ □	= 18
		+ □	= 63

Enter each of the numbers from 1 to 9 in the grid, so that the six sums work. We've placed two numbers to get you started. Each sum should be calculated left to right or top to bottom.

Please note, BODMAS does not apply

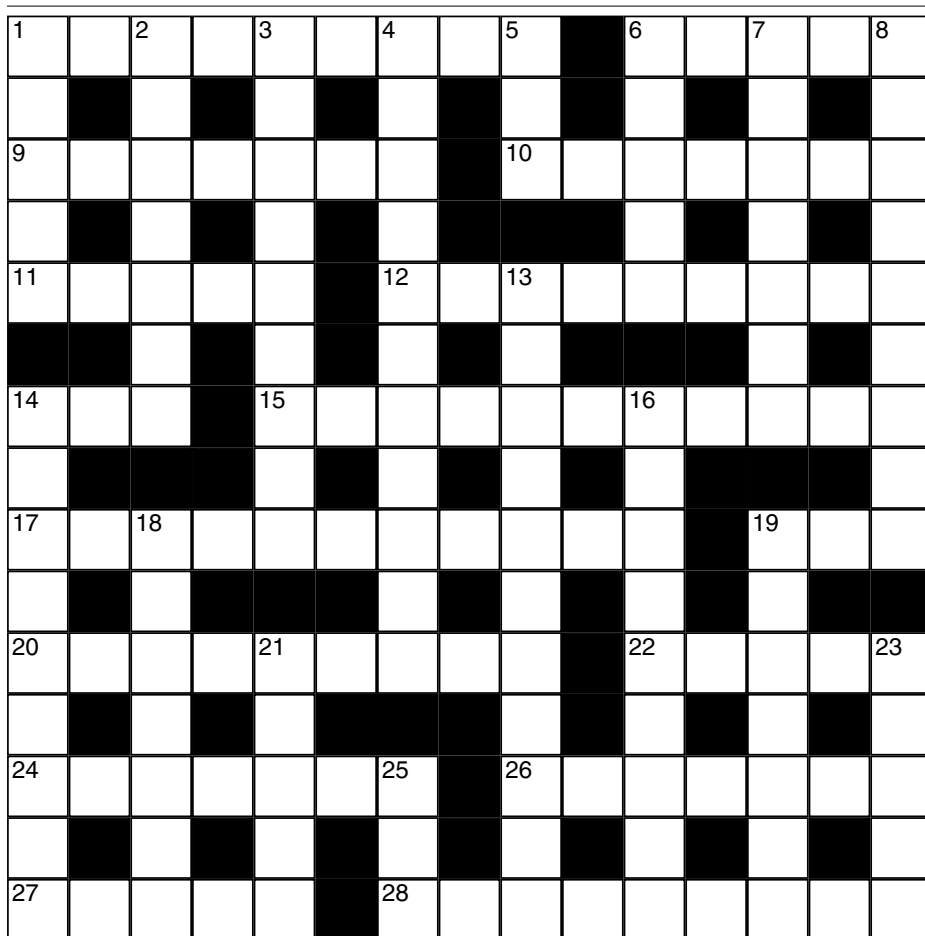
Killer Moderate No 9251

Killer Tough No 9252

As with standard Sudoku, fill the grid so that every column, every row and every 3x3 box contains the digits 1 to 9. Each set of cells joined by dotted lines must add up to the target number in its top-left corner. Within each set of cells joined by dotted lines, a digit cannot be repeated.

Cluelines Stuck on Sudoku, Killer or KenKen? Call 0901 293 6263 before midnight to receive four clues for any of today's puzzles. Calls cost £1 plus your telephone company's network access charge. SP: Spoke, 0333 202 3390 (Mon-Fri 9am-5.30pm).

Times Crossword 28,808



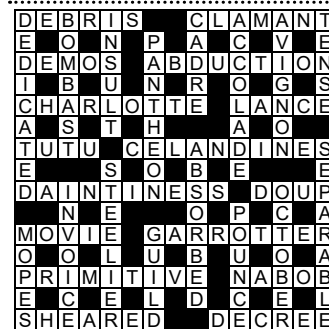
ACROSS

- 1 Doubt maiden's yielding (9)
- 6 Problem with a century plant (5)
- 9 Dolphin's mostly well out around slipway perhaps (7)
- 10 What might mix up a salt? (7)
- 11 Note fight in the vicinity (5)
- 12 A harvest and place to store it back in citadel (9)
- 14 Humour with appeal (3)
- 15 Like exhausted kangaroos that mustn't be touched (3,2,6)
- 17 Newspaper going all out for joint ownership scheme (4,7)
- 19 Illness reportedly went quickly (3)
- 20 Fine example of hospice we renovated (9)
- 22 Poor in seven days if losing regularly (5)
- 24 Very impressive river, one where nothing is good (7)
- 26 Eudora's strangely excited (7)
- 27 Ideal shot bags fifth of wickets (5)
- 28 City to west end of the lake is drier (4,5)

DOWN

- 1 Mother's holding meeting — a source of eruptions (5)
- 2 Eg, Liverpool game grips Everton and Anfield primarily (7)
- 3 Reckless drive around Oxford University (9)
- 4 Show by example type of coffee I consumed (11)
- 5 Fuel cut — not keeping hot (3)
- 6 Clever Chinese dog, not English one (5)
- 7 Sentimental girl invited to see garden left home (7)
- 8 Deposed dictator accuses EU for being thrown out (9)
- 13 Umpire to falsify extended time given new time in cooler (11)
- 14 Oppose HST after understanding land's cut by line (9)
- 16 Moved flag right onto higher part of church (5,4)
- 18 Making fast million over old craze (7)
- 19 Fine good-for-nothing over blade (7)
- 21 Very old king I spotted in carriage (5)
- 23 Sing unknown poem by learner (5)
- 25 Yak burgers, fat and cabbage hearts (3)

Yesterday's solution 28,807



Check today's answers by ringing 0905 757 0141 by midnight. Calls cost £1 per minute plus your telephone company's network access charge. SP: Spoke 0333 202 3390.

Solutions

Quick Cryptic 2566

C	R	O	S	S	E	X	A	M	I	N	E
H	I	T	Q	S	M	N					
E	L	V	E	R	U	P	S	T	A	R	T
L	I	I	I	A	S	H	E	E			
M	E	E	R	K	A	T	S	H	E	E	N
	R	E	Y	S							
S	H	A	B	B	Y	D	I	E	P	P	E
P		R	M	N	R						
O	U	T	R	E	A	M	A	T	O	R	Y
T	O	A	R	T	T	E					
T	R	U	C	K	E	R	I	N	E	P	T
E	R	E	A	O	S	I					
D	I	S	C	R	I	M	I	N	A	T	E

Codeword 5105

S	C	Y	T	H	E	Q	U	A	Y
J	H	R	I	U	M	R			
A	R	O	M	A	G	R	I	M	A
M	E	L	C	H	N	Z	A		
M	E	E	R	K	A	T	I	D	E
Y	R		H	N					
B	A	N	J	O	B	E	L	L	Y
S		O		E		A			
C	A	R	O	B	F	L	U	M	M
O	U	L	F	N	P	U			
P	A	R	V	E	N	U	C	R	O
E	A	S	S	U	O	E			
A	L	M	S	E	X	T	E	N	D

Kakuro 3605

7	9		8	9		9	8	7	
8	6	9	1	7	5		8	6	9
9	8	7	5		4	1	2		
1	3		4	5	7	3	6	8	9
	7	9		2	8		1	2	3
3	1	2		1	2		7	9	
9	4	8	6	3	1	7		3	1
		1	2	4		9	7	1	2
5	1	4		7	5	8	9	6	4
1	2	3		9	8			5	3

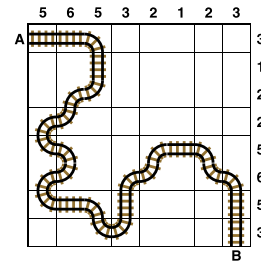
Sudoku 14,585

6	5	7	2	9	3	8	1	4
3	8	9	6	1	4	7	2	5
1	2	4	5	8	7	9	6	3
8	4	6	3	7	9	2	5	1
2	9	1	8	4	5	3	7	6
7	3	5	1	6	2	4	8	9
5	7	8	4	3	1	6	9	2
9	1	3	7	2	6	5	4	8
4	6	2	9	5	8	1	3	7

GK Crossword 215

G	R	A	C	E	L	A	N	D	M	O	N	E	T
O	L	N	L	A	A	O	R						
T	W	I	N	T	U	B	N	A	M	I	B	I	A
Y	S	R	A	I	M	E	T						
E	X	T	R	A	C	A	S	S	O	U	L	E	T
D	R	I	F	T	E	R	S	W	E	I	R		
I	R	E	E	Y	M	A	I						
C	O	M	B	F	O	C	A	C	C	I	A		
K	A	D	S	S	C	E							
T	I	C	T	A	C	T	O	E	A	L	P	H	A
R	L	N	R	M	S	R	T						
A	D	E	N	I	N	E	J	P	S	W	I	C	H
C	A	E	S	T	A	Z	O						
Y	E	N	T	L	S	H	E	E	R	N	E	S	S

Train Tracks 2137



Sudoku 14,586

8	6	5	4	1	7	2	9	3
9	1	7	3	5	2	4	8	6
2	3	4	6	9	8	5	7	1
4	9	2	7	3	6	8	1	5
6	5	8	1	4	9	3	2	7
3	7	1	2	8	5	6	4	9
5	4	9	8	6	1	7	3	2
1	2	3	5	7	4	9	6	8
7	8	6	9	2	3	1	5	4

Cell Blocks 4988

	2		4		
	4				4
			3		
4	4			12	
3					3
		2	4		

Set Square 3608

6	x	5	+	8
x		x		x
9	-	3	x	2
+		÷		+
7	+	1	-	4

Lexica 7211

T	R	I	P		
H			O	A	F
R	A	I	L		
U			I		
S	P	A	C	E	
T			Y		

Sudoku 14,587

3	6	2	5	7	9	8	1	4
4	8	7	1	6	3	9	2	5
9	1	5	4	8	2	7	6	3
2	4	9	8	1	6	5	3	7
8	5	1	3	4	7	2	9	6
6	7	3	2	9	5	4	8	1
1	9	6	7	5	8	3	4	2
5	2	4	9	3	1	6	7	8
7	3	8	6	2	4	1	5	9

Futoshiki 4646

3	1	<	2	4	<	5
4	2		5	3		1
1	5		3	2		4
5	3		4	1	<	2
2	4		1	5	>	3

KenKen 6097

3	5	1	4	6	2
6	2	5	1	3	4
1	3	2	6	4	5
5	6	4	2	1	3
4	1	3	5	2	6
2	4	6	3	5	1

Lexica 7212

E					O
D	E	V	O	I	D
I		E			E
F		R	A	N	
Y	E	S		O	
		E	D	D	Y

Today's solutions

Killer 9249

7	3	1	9	8	4	2	6	5
6	5	8	1	2	7	3	9	4
9	4	2	6	5	3	1	7	8
2	1	9	7	6	8	4	5	3
3	6	4	2	1	5	9	8	7
8	7	5	3	4	9	6	1	2
1	2	3	8	7	6	5	4	9
4	9	7	5	3	1	8	2	6
5	8	6	4	9	2	7	3	1

Killer 9250

9	4	8	7	3	1	6	2	5
6	5	7	4	9	2	8	1	3
1	2	3	5	6	8	9	7	4
5	8	4	2	7	9	1	3	6
7	6	1	3	5	4	2	9	8
3	9	2	8	1	6	4	5	7
2	3	9	6	8	7	5	4	1
8	1	5	9	4	3	7	6	2
4	7	6	1	2	5	3	8	9

Cryptic Quintagram

- 1 Bagel
- 2 Laugh
- 3 Maigret
- 4 Flatter
- 5 Ignorant

Suko 4007

4	1	8
13	20	
6	2	9
18	19	
7	3	5

Brain Trainer

- Easy 500
- Medium 266
- Harder 61

Word watch

- Quinquereme** (a) An ancient ship with five banks of oars (*Chambers*)
- Plumassier** (b) A trader in ornamental feathers (*OED*)
- Vitiosity** (a) The state of being legally faulty (*OED*)

Chess – Winning Move

- 1 Rh6+! forces mate, eg 1 ... Kg7 (1 ... Kxh6 2 Qh5+ Kg7 3 Qg5+ Kh8 4 Qh6 mate)
- 2 Qg4+! Kxh6 3 Qh5+ Kg7 4 Qg5+ Kh8 (4 ... Kf8 5 Qxg8 mate)
- 5 Qh6 mate

Samurai medium

Fill each grid so that every column, every row and every 3x3 box contains the digits 1 to 9. Where the puzzles overlap, the rows and columns do not go beyond their usual length.

5						7						3 2			6 8														
7			6 4						8 9						5						4								
8						2 1						8									3 2								
9 6						8						7																	
2															4 7			1											
			7						3 8						2						7 6 3								
8			9			1						1			5			7			9			6					
						3 6						7									6			3 7					
2			5			8						2									4						1		
									5			4			7														
			4						2			5																	
			9			6			7																				
8						1						6						6			8			9					
2			1			5						7						8			1								
9			4						3			7			2						7			6			1		
1 2 3						7									4 5						6								
						1			9 5															8					
			8												2			9						7 5					
3 8															3 1									6					
4						8									9 6			5 7						3					
			6 3			2 8									8									1					

Futoshiki

Fill the blank squares so that every row and column contains each of the numbers 1 to 5 once only. The symbols between the squares indicate whether a number is larger (>) or smaller (<) than the number next to it.

□	□	□	□	□		
	∨					
□	□	>	□	<	□	□
4	□	□	□	□		
				∧		
□	3	□	□	>	□	
□	>	□	□	>	□	1

Train Tracks

Lay tracks to enable the train to travel from village A to village B. The numbers indicate how many sections of track go in each row and column. There are only straight sections and curved sections. The track cannot cross itself.

	3	4	6	6	2	3	4	8	
	□	□	□	□	□	□	□	□	7
	□	□	□	□	□	□	□	□	8
	□	□	□	□	□	□	□	□	6
	□	□	□	□	□	□	□	□	4
	□	□	□	□	□	□	□	□	2
	□	□	□	□	□	□	□	□	3
	□	□	□	□	□	□	□	□	2
A	□	□	□	□	□	□	□	□	4
									B

Sudoku fiendish

	3						
		2		5	9		
4	7	9		8			
		1		8	7	5	
		7	6		4	9	
9			3				
			6	7	8	3	
					2		5
			5		4		

Killer tricky

Fill the grid so that every column, every row and every 3x3 box contains the digits 1 to 9. Each set of cells joined by dotted lines must add up to the target number in its top-left corner. Within each set of cells joined by dotted lines, a digit cannot be repeated.

6		13		8			16		8
		20		17	13		8		
9				19	8			23	
	11	14							
17				11	20				14
	30	6		12		22	9		
6									
				19				16	
12						12		6	

Suko

17	19	
20	23	

13	15	17
----	----	----

Place the numbers 1 to 9 in the spaces so that the number in each circle is equal to the sum of the four surrounding spaces, and each colour total is correct

Codeword

Every letter in the crossword-style grid, right, is represented by a number from 1 to 26. Each letter of the alphabet appears in the grid at least once. Use the letters already provided to work out the identity of further letters. Enter letters in the main grid and the smaller reference grid until all 26 letters of the alphabet have been accounted for. Proper nouns are excluded.

7	4	4	10	4	6	G	19		15	5	17	13	2
11		14		25			11		4		24		14
17	8	6	10	11			4	8	26	17	1	3	13
10		5		1			2		10		11		16
4	22	16	21	15	21	17	8		26	17	18	19	
14				4			8		15		13		
13	11	1	2	4	8		12	4	13	16	10	11	
		5	H		23		9		8				11
16	5	14	6		4	14	16	13	21	3	11	1	
4		24		20		11		14		1			21
22	10	17	16	11	17	14		10	11	17	13	11	
21		1		1		11		17		22		13	
15	17	24	21	8		3	17	1	23	11	13	16	

A B C D E F G H I J K L M N O P Q R S T U V W X Y Z

1	2	3	4	5	H	G	7	8	9	10	11	12	13
14	U	15	16	17	18	19	20	21	22	23	24	25	26

Mini Sudoku

Fill in the grid so that every column, every row and every 3x2 box contains the digits 1 to 6

	5				
	3			2	
3			6	2	
6	1				3
	6			1	
				4	

Solutions in tomorrow's Times2

THE  TIMES

MindGames Tuesday January 9 2024
Brain boost puzzles

Yesterday's solutions

SAMURAI

1	4	9	3	6	2	5	8	7			6	1	9	2	3	4	7	8	5	
7	3	5	8	9	1	2	4	6			7	4	3	5	9	8	6	1	2	
8	6	2	7	5	4	3	9	1			5	8	2	6	1	7	4	9	3	
9	2	1	4	3	8	7	6	5			3	6	5	8	7	9	2	4	1	
5	8	6	2	7	9	4	1	3			9	7	4	1	2	6	5	3	8	
4	7	3	5	1	6	9	2	8			1	2	8	3	4	5	9	6	7	
2	5	4	1	8	7	6	3	9	2	7	8	4	5	1	9	8	2	3	7	6
3	9	8	6	4	5	1	7	2	3	5	4	8	9	6	7	5	3	1	2	4
6	1	7	9	2	3	8	5	4	1	6	9	2	3	7	4	6	1	8	5	9
						9	2	1	5	3	6	7	4	8						
						4	8	7	9	1	2	3	6	5						
						3	6	5	4	8	7	1	2	9						
7	9	8	4	2	3	5	1	6	8	4	3	9	7	2	4	5	8	1	3	6
1	2	4	8	6	5	7	9	3	6	2	1	5	8	4	6	3	1	7	9	2
5	6	3	1	7	9	2	4	8	7	9	5	6	1	3	2	9	7	5	8	4
6	4	7	2	3	1	8	5	9				2	9	7	1	6	3	8	4	5
9	5	2	7	8	4	3	6	1				4	5	6	8	7	9	2	1	3
3	8	1	5	9	6	4	2	7				8	3	1	5	4	2	9	6	7
4	7	5	6	1	8	9	3	2				3	2	5	9	8	4	6	7	1
8	1	9	3	5	2	6	7	4				1	4	8	7	2	6	3	5	9
2	3	6	9	4	7	1	8	5				7	6	9	3	1	5	4	2	8

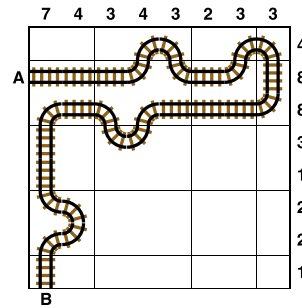
SUKO

6	2	9
3	4	7
8	5	1

MINI SUDOKU

3	5	1	2	6	4
2	6	4	3	1	5
1	4	5	6	2	3
6	3	2	4	5	1
4	1	6	5	3	2
5	2	3	1	4	6

TRAIN TRACKS



FUTOSHIKI

3	5	2	1	4			
5	2	4	3	1			
2	4	1	5	3			
4	>	1	3	2	5		
1	<	3	5	>	4	>	2

SUDOKU

1	4	7	3	9	8	2	6	5
9	2	8	5	4	6	7	1	3
3	5	6	2	1	7	8	9	4
2	7	9	1	6	3	4	5	8
8	1	4	7	5	2	6	3	9
5	6	3	9	8	4	1	7	2
4	3	1	6	2	9	5	8	7
7	8	5	4	3	1	9	2	6
6	9	2	8	7	5	3	4	1

KILLER

1	8	2	3	4	6	9	7	5
9	5	3	2	7	8	4	1	6
6	4	7	5	1	9	3	2	8
8	9	4	7	3	2	5	6	1
7	3	6	1	9	5	2	8	4
5	2	1	8	6	4	7	3	9
3	6	8	9	5	7	1	4	2
4	1	5	6	2	3	8	9	7
2	7	9	4	8	1	6	5	3

CODEWORD

G	R	O	T	T	O	F	A	C	E		
D	A	U	D	R	R						
A	D	D	I	C	T	I	V	E	O	R	B
Z	I	K	O	Q	W	L					
Z	O	O	M	S	U	B	U	R	B	I	A
L	P	S	E	A	C						
I	N	J	U	R	A	N	O	R	A	K	
N	O	O	S	T							S
G	R	U	D	G	I	N	G	S	P	A	M
L	R	R	I	S	I						I
Y	E	N	E	X	P	E	C	T	A	N	T
A	S	E	A	N	H						
P	L	U	S		R	E	B	O	O	T	